

CASE STUDY InterVapor®

Uptake Medical®

A Broncus Company

Sana Klinikum
Hof



Treating Physician: Dr. med. Wolfgang Hohenforst-Schmidt

Hospital / Country: Sana Klinikum Hof/ Germany

Patient Background

Age / Gender: 62/male

Disease: COPD IV

Clinical History: Progressive COPD

Referral Pathway: MD Dr. Rumpf, Hof

Procedure

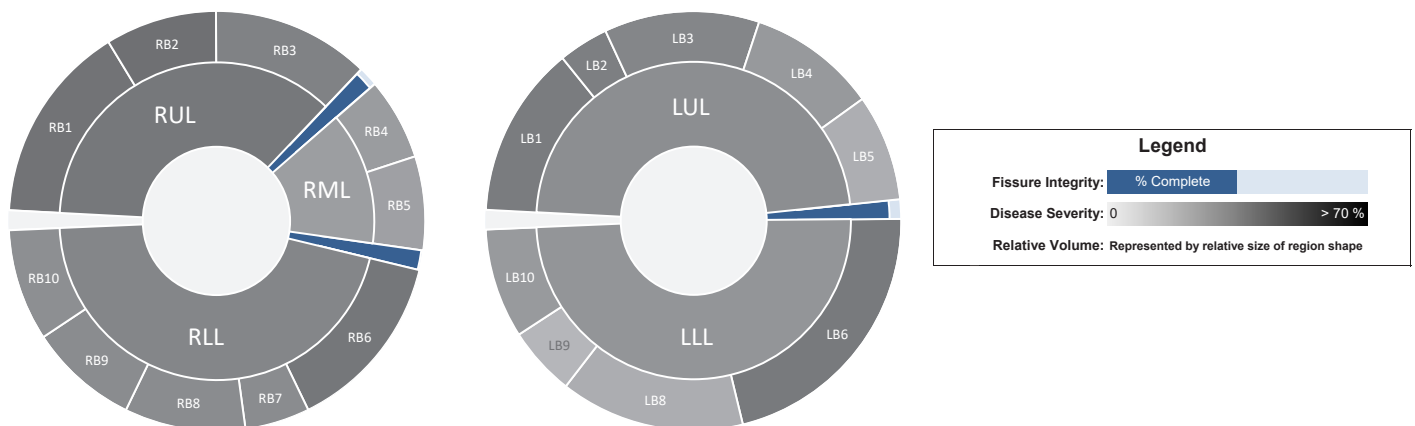
Basis of decision to treat with BTVA* (InterVapor®): Incomplete fissure, patient did not want implants.

The BTVA treatment has been performed under sedation.

The total treatment time was 12 minutes.

Segments RB1 and RB2 have been treated on a subsegmental and segmental level, respectively.

IMAGES



Pulmonary Function Changes: RV down from 264% to 206%, FEV1 up from 31% to 44%

Quality of life changes: Increased activity level, patient feels much better, no oxygen, improved quality of life

CONCLUSION

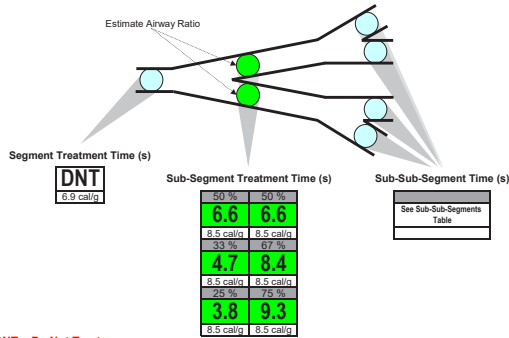
PHYSICIAN PERSPECTIVE ON OUTCOMES:

MD Dr. med. Rumpf, the referring physician, indicates that the patient has significant improvement of his pulmonary functions, especially RV and FEV1. BTVA treatment can be used successfully in patients with heterogeneous emphysema with upper lobe predominance. Patients may achieve clinically important ameliorations in physiology, quality of life and exercise tolerance following a single session of unilateral BTVA. The clinical condition of the patient plays a crucial role on the day of admission since he may have no signs of exacerbation.

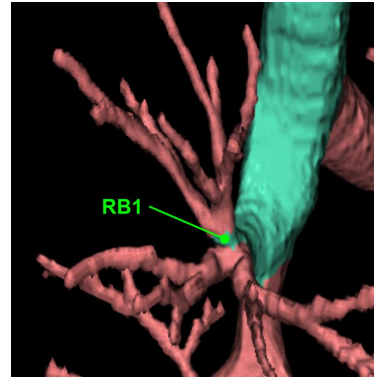
Right Upper Lobe Segment: RB1

Segment volume:	599 ml	Target vapor dose:	8.5 cal/g
Segment mass:	59 g	Vapor dose lower limit:	7.5 cal/g
Percent of lobe:	42 %	Vapor dose upper limit:	8.5 cal/g
Emphysema (%-950):	50 %		

Preferred treatment location: **Sub-Segmental Level**
 A sub-segmental treatment is preferred because a segmental treatment would result in an out of range dose.



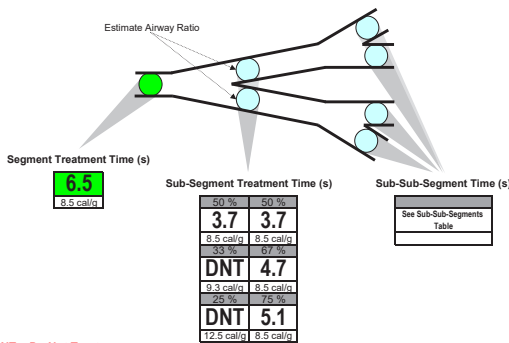
Note: DNT = Do Not Treat



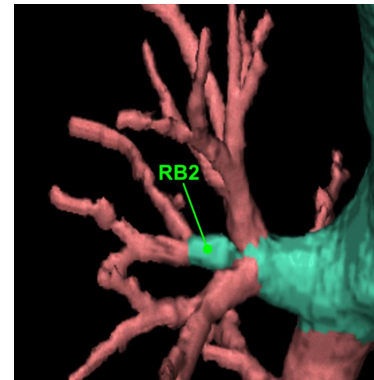
Right Upper Lobe Segment: RB2

Segment volume:	336 ml	Target vapor dose:	8.5 cal/g
Segment mass:	29 g	Vapor dose lower limit:	7.5 cal/g
Percent of lobe:	24 %	Vapor dose upper limit:	8.5 cal/g
Emphysema (%-950):	51 %		

Preferred treatment location: **Segmental Level**

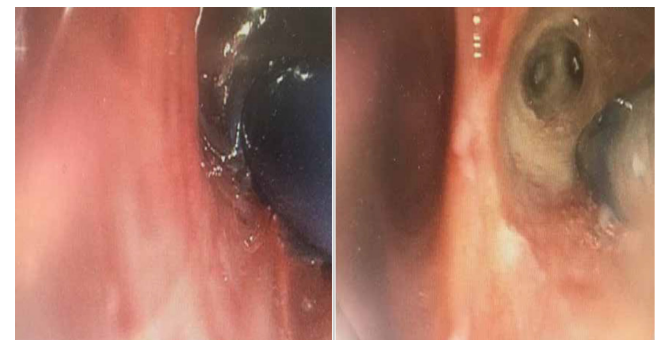


Note: DNT = Do Not Treat



Left picture shows the catheter inside the target lobe with the balloon dilated during the procedure.

The right picture emphasizes the Vapor catheter distally from the target lobe and the ablated area.



Bronchoscopic Thermal Vapor Ablation (BTVA®) treatment included in the

2019 GOLD Guidelines

Uptake Medical®

A Broncus Company

CONTACT

Uptake Medical®, a Broncus Company
 Phone: +31 (0) 733032563
 Email: info@uptakemedical.com
 or contact your local representative

www.uptakemedical.com

Rx only. For healthcare professional use only. Not for sale or distribution in the USA. Please contact your Uptake Medical representative for product availability. *BTVA treatment included in the 2019 GOLD Guidelines
 © 2019 Uptake Medical Technology. All Rights Reserved.