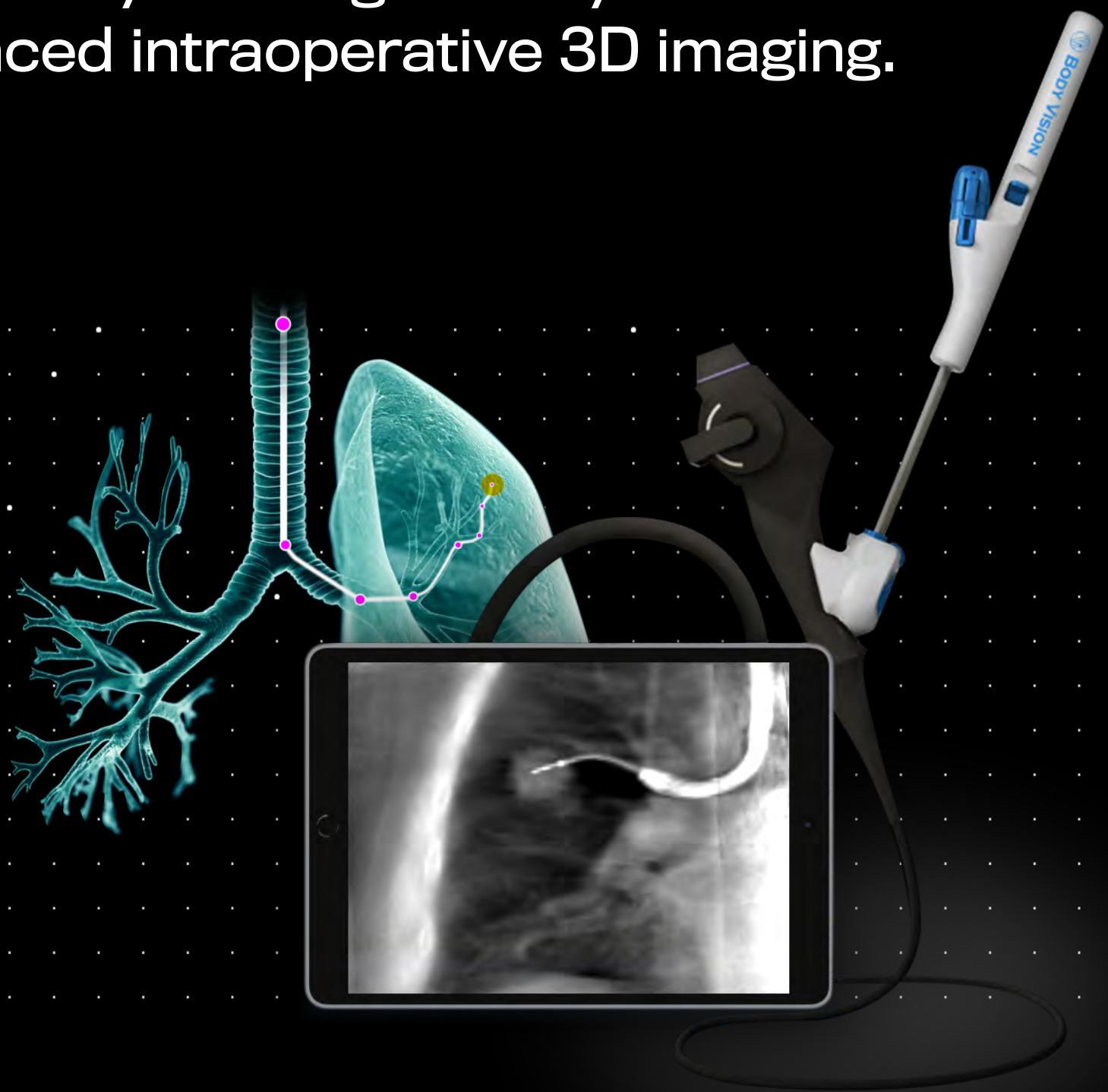


Body Vision Medical Introduces

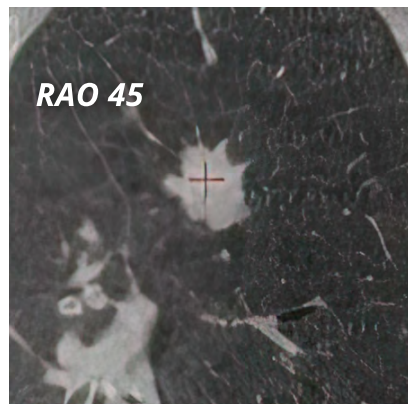
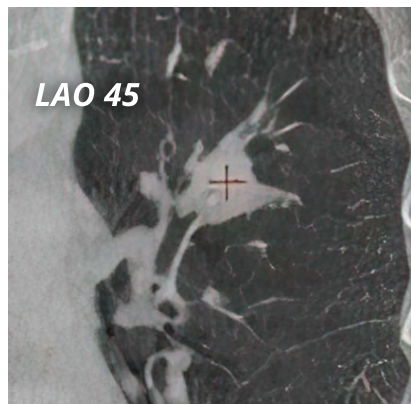
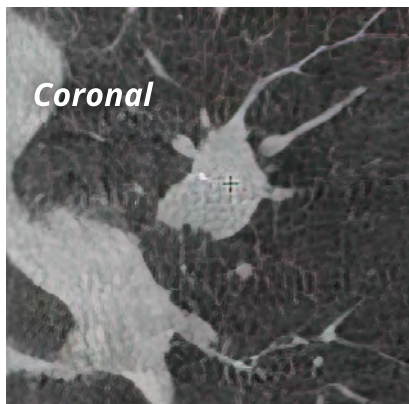
The New Standard in Lung Cancer Diagnostics

Maximize your diagnostic yield with
advanced intraoperative 3D imaging.

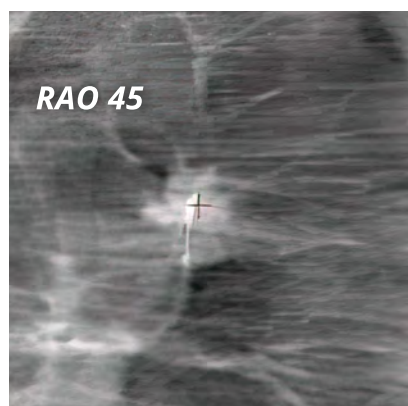
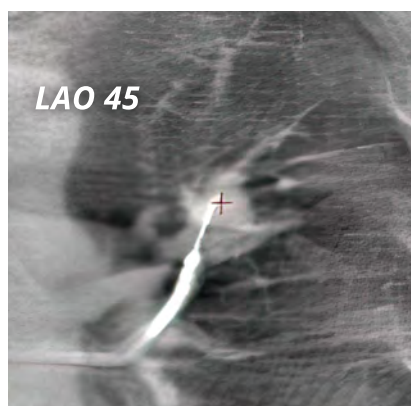
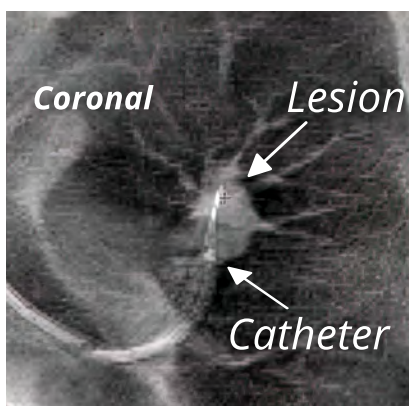


BodyVision
see beyond limits

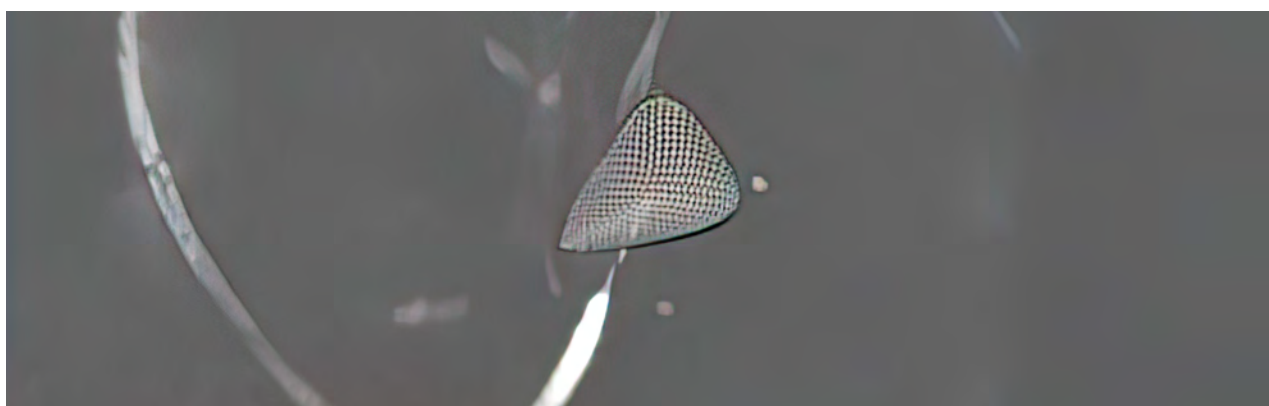
Visually Confirm **Tool-in-Lesion** With Intraoperative 3D Imaging



Pre-Operative CT



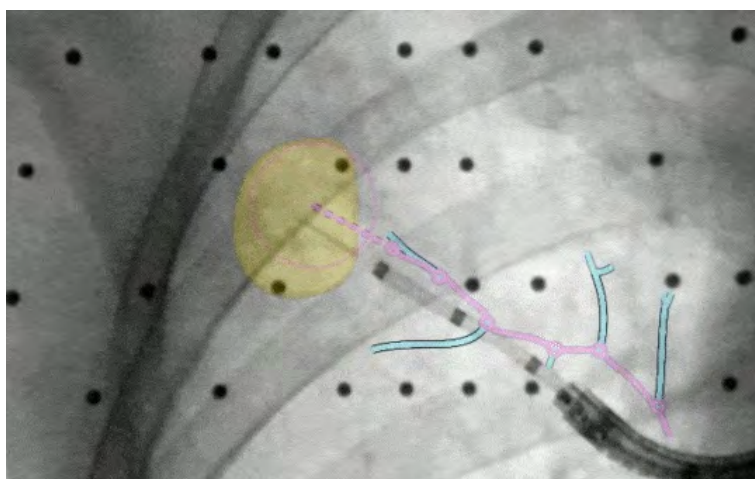
Body Vision
Intraoperative 3D
Imaging



Body Vision
Intraoperative
3D View

Maximize Your Diagnostic Yield

Body Vision's C-Arm Based Tomography (CABT) technology produces real-time, intraoperative 3D imaging using multi-plane x-ray images acquired with any conventional C-Arm. This enables navigation to the actual lesion location and visual confirmation of tool-in-lesion so that you can biopsy with confidence.



Augmented Fluoroscopy

Body Vision's augmented fluoroscopy view provides real-time imaging with any standard C-arm so that you can trade blind "cloud" biopsy for an image-guided approach that has been proven to maximize diagnostic yield.

Body Vision System

A modular solution that can be a dedicated, intraoperative 3D imaging system for tool-in-lesion confirmation or a standalone navigational bronchoscopy platform.



Tablet

Innovative tablet provides total control of the Body Vision system from any location in the room

Planning and ultimate procedure management

Stand Height: 1003 mm to 1407 mm
Tablet: W: 292 x H: 201 x D: 8.5 mm
Base: W: 450 x D: 455 mm

Main Unit

Powerful Artificial Intelligence (AI) technology in a compact, state-of-the-art design

Portable, small and seamless

No electro-magnetic interference due to the lack of electromagnetic sensors

W: 460 x H: 693 x D: 600 mm

*The Body Vision System uses fluoroscopic live X-ray images to support catheter/device navigation during pulmonary procedures and is not intended for diagnostic purposes

Optional Components

Monitor

Body Vision Medical can provide an optional medical grade monitor upon request.



Procedural Kit

Exceptional access and maneuverability for those looking to use Body Vision as an end-to-end solution for navigational bronchoscopy

Compatible with most bronchoscopes and accommodates a wide range of endobronchial tools

90° and 210° pre-curved sheaths available to access difficult, peripheral lesions



Intraoperative 3D Imaging **Eliminates CT- to-Body Divergence**

Body Vision uses a proprietary AI algorithm to produce tomographic images that are comparable to cone-beam CT (CBCT) using any conventional C-arm.

Cone-Beam CT



Body Vision Intraoperative 3D Imaging



THE BODY VISION INTRAOPERATIVE 3D IMAGING SOLUTION

Superior Clinical Outcomes

Real-time, intraoperative 3D imaging for tool-in-lesion confirmation to maximize diagnostic yield

Seamless Integration

Compatible with most existing tools and equipment, including robotic bronchoscopy platforms

Accessible & Incremental Revenue

Flexible acquisition options and incremental downstream revenue generates significant return on investment

FOR MORE INFORMATION OR TO REQUEST A DEMO, CONTACT US:

✉ info@bodyvisionmedical.com

🌐 BodyVisionMedical.com

☎ 646-863-7848

🌐 [Body-Vision-Medical](https://www.linkedin.com/company/body-vision-medical)

Please see the package insert for the complete list of indications, warnings, precautions, and other medical information.

