

SVS Valve Treatment Solutions for Emphysema and Air Leak



SVS Valve Treatment

A Minimally Invasive Treatment Option

SVS valve treatment is a promising approach for treating a diseased lung in emphysematous patients or a damaged lung resulting in air leaks.

The one-way Spiration Valve is a device placed in lung airways where it limits the airflow to the occluded areas of the lung while still allowing mucus and trapped air to pass by in the proximal direction. The valves enable total occlusion.

SVS valve treatment benefits for emphysema patients may include:

- Reduced hyperinflation
- Improved pulmonary function (FEV_1)
- Improved exercise tolerance
- Improved quality of life as measured by SGRQ

Procedure Steps

Airway Sizing

Sizing the selected airways with a calibrated balloon catheter determines the appropriate valve size.



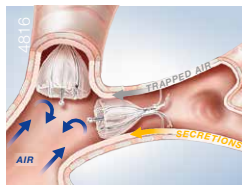
SVS Valve Deployment

The SVS valve deployment catheter is introduced through the working channel of a flexible bronchoscope and deployed at a targeted location.



Airway Occlusion

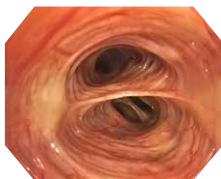
Once in place, the SVS valve expands and contracts with the breathing, blocking distal airflow while allowing trapped air and mucus to escape.



Video Bronchoscope BF-1TH1100

With our brand-new EVIS X1 bronchoscopes, we will bring bronchoscopy to the next level. The new BF-1TH1100 offers superb HDTV image quality and comes with a smaller diameter but offers an enlarged working channel at the same time. This enables increased suction capabilities and contributes to better view in the bronchial airways. Precise targeting is further enhanced by the unique insertion tube rotation function. Due to these features and specifications, SVS valves can also be conveniently placed in difficult airways.

4531



EVIS X1

- Distal end Ø: 5.8 mm
- Insertion tube Ø: 6.1 mm
- Instrument channel Ø: 3.0 mm



88500

SVS Valve System Components

SVS Airway Sizing Kit

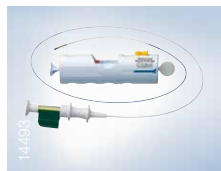
The SVS airway sizing kit consists of a balloon catheter and calibration tool and is used to determine the appropriate valve size needed for each airway.



920

SVS Deployment System

The SVS deployment catheter and loader: a unique and convenient deployment system for delivery of multiple valves during a single patient procedure.



14493

SVS Valves

SVS valves are now available in four different sizes: 5 mm, 6 mm, 7 mm and 9 mm. The SVS valve's unique design is comprised of a nitinol frame surrounded by a polymer membrane.



14006

SVS Valve Treatment

Specifications at a Glance

Video Bronchoscopes

	BF-1TH1100	BF-1TH190
Insertion Tube OD (mm)	6.1	6.0
Distal End OD (mm)	5.8	6.2
Channel ID (mm)	3.0	2.8
Bending (Up/Down)	180°/130°	180°/130°
Rotation Function (Left/Right)	120°/120°	120°/120°
Working Length (mm)	600	600
Field of View	120°	120°
Depth of Field (mm)	3–100	3–100
NBI	✓	✓
Comments	HDTV, OT	HDTV, OT

OT = One-Touch Connector

Spiration Valve System

Single-Use Spiration Valves

Article Name	Article Number	Min. Working Channel Ø	Opening Width Ø
IBV-V5	N3495330	2.0 mm	5 mm
IBV-V6	N3495430	2.0 mm	6 mm
IBV-V7	N3495530	2.0 mm	7 mm
IBV-V9	N5381200	2.6 mm	9 mm

Single-Use SVS Deployment System

Article Name	Article Number	Min. Working Channel Ø	Working Length
IBV-C26N	N5381300	2.6 mm	1020 mm
IBV-C20	N3521830	2.0 mm	1140 mm

Single-Use SVS Airway Sizing Kit

Article Name	Article Number	Min. Working Channel Ø	Working Length	Balloon Ø
IBV-VSK	N5534500			
B5-2C	N3530530	2.0 mm	1050 mm	11 mm

More information can be found in our comprehensive EndoTherapy catalog or at www.olympus-europa.com.

As medical knowledge is constantly growing, technical modifications or changes of the product design, product specifications, accessories and service offerings may be required.

OLYMPUS

OLYMPUS EUROPA SE & CO. KG
Postbox 10 49 08, 20034 Hamburg, Germany
Wendenstrasse 14-18, 20097 Hamburg, Germany
Phone: +49 40 23773-0, Fax: +49 40 233765
www.olympus-europa.com

E0428708 · 11/20 · OKM